

# puzzi 100

1.100-105

# puzzi 200

1.193-105



## **ENGLISH**

Page 2, 3–7, 21, 22

## **FRANÇAIS**

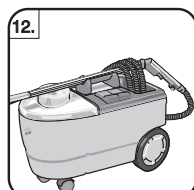
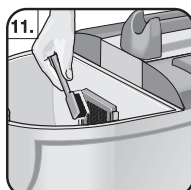
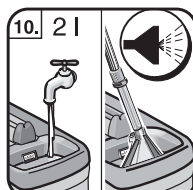
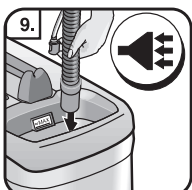
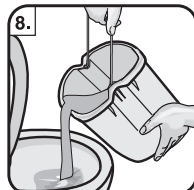
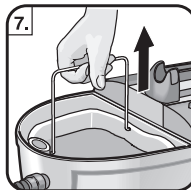
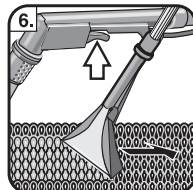
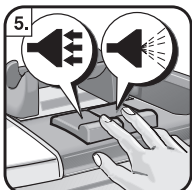
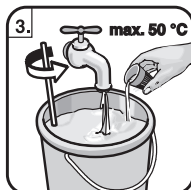
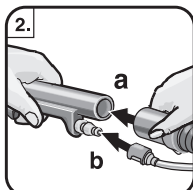
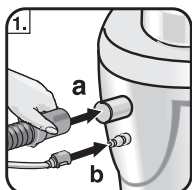
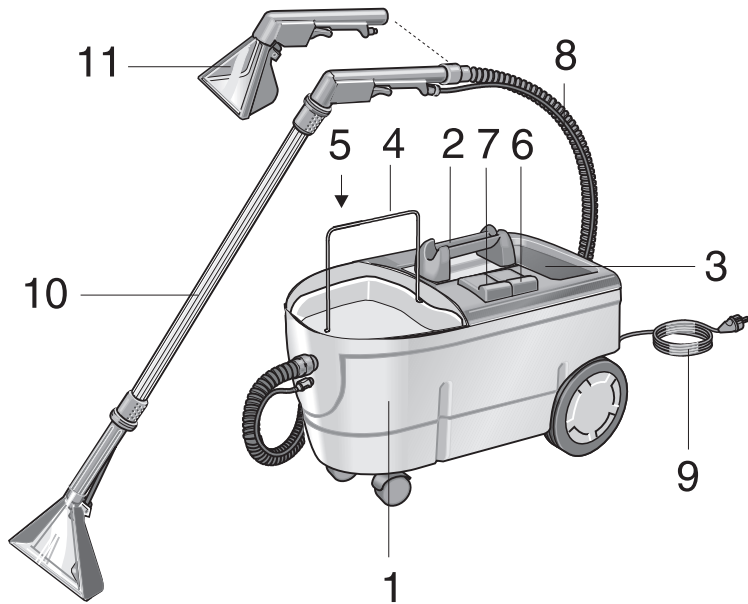
Page 2, 8–12, 21, 22

## **ESPAÑOL**

Página 2, 13–19, 21, 22



**5.959-016 (10/00)**



# Important Safety Instructions

When using an electrical appliance, basic precautions should always be followed, including the following:

## READ ALL INSTRUCTIONS BEFORE USING THIS APPLIANCE

### Warning – To reduce the risk of fire, electric shock, or injury:

1. Do not leave appliance when plugged in. Unplug from outlet when not in use and before servicing.
2. To reduce the risk of electric shock – Use indoors only.
3. Do not allow to be used as a toy. Close attention is necessary when used by or near children.
4. Use only as described in this manual. Use only manufacturer's recommended attachments.
5. Do not use with damaged cord or plug. If appliance is not working as it should, has been dropped, damaged, left outdoors, or dropped into water, return it to a service center.
6. Do not pull or carry by cord, use cord as a handle, close a door on cord, or pull cord around sharp edges or corners. Do not run appliance over cord. Keep cord away from heated surfaces.
7. Do not unplug by pulling on cord. To unplug, grasp the plug, not the cord.
8. Do not handle plug or appliance with wet hands.
9. Do not put any objects into openings. Do not use with any openings blocked; keep free of dust lint, hair, and anything that may reduce air flow.
10. Keep hair, loose clothing, fingers, and all parts of body away from openings and moving parts.
11. Turn off all controls before unplugging.
12. Use extra care when cleaning on stairs.
13. Do not use to pick up flammable or combustible liquids such as gasoline or use in areas where they may be present.
14. This appliance is provided with double insulation. Use only identical replacement parts. See instructions for Servicing of Double-Insulated Appliances.
15. Do not pick up anything that is burning or smoking, such as cigarettes, matches or hot ashes.

### Save these Instructions

## DOUBLE INSULATION INSTRUCTIONS



### Servicing of double insulated appliances

A double-insulated appliance is marked with one or more of the following: The words "**DOUBLE INSULATION**" or "double insulated" or the double insulation symbol (square within a square).

In a double-insulated appliance, two systems of insulation are provided instead of grounding. No grounding means is provided on a double-insulated appliance, nor should a means for grounding be added to the appliance. Servicing a double-insulated appliance requires extreme care and knowledge of the system, and should be done only by qualified service personnel. Replacement parts for a double-insulated appliance must be identical to the parts they replace.

# English

## Unit diagram

- 1 Housing
- 2 Carrying handle
- 3 Fresh-water tank with suction strainer
- 4 Dirty-water reservoir, removable
- 5 Cover \*
- 6 Spraying: switch on and off 
- 7 Vacuuming: switch on and off 
- 8 Spray and suction hose complete
- 9 Power plug with cable
- 10 Floor nozzle for cleaning carpets – working width 230 mm
- 11 Hand nozzle for cleaning upholstery – working width 110 mm (*optional accessory*)

\* not shown

## Optional accessories

We offer various optional accessories for a wider variety of applications. See them in our catalogue or ask at your nearest Kärcher retail outlet.



## Important information

**This appliance is intended for commercial use**

### For your safety

Take note also of all instructions enclosed with the detergents used.

The recommended detergents may not be used undiluted. The products are safe to use because they contain no acids, alkalis or substances harmful to the environment. We advise you to store the detergents so that they are inaccessible to children, to bathe the eyes thoroughly with water should the detergents come into contact with them and to consult a doctor should they be swallowed.

Legal regulations should be observed for disposal of dirty water and detergent solution.

### For the sake of the environment

When you unpack the unit do not simply throw packaging out with the household rubbish.

Hand over the different parts of the packaging to the appropriate collection points for recycling.

## Warranty

The applicable warranty conditions in different countries are issued by the respective national distributor of our products. During the warranty period, any malfunctions of the cleaner caused by a material or manufacturing defect will be repaired free of charge.

In the event of a warranty claim, please take the cleaner, with the accessories and proof of purchase, to your original dealer or to the nearest authorised customer service centre.

## Operating the cleaner

### ■ Using the cleaner correctly

This cleaner is intended for use as follows:

- as a wet cleaner for carpets and carpeting
- in accordance with the explanatory details and safety information contained in these operating instructions

Using the cleaner in any other way is considered to be contrary to its intended purpose. The manufacturer will not be liable for any damages that occur as a result of improper usage. In such cases liability rests solely with the user.

### ■ Putting into operation for the first time

- Put the suction hose of the spray-suction hose on to the connector on the unit (**Fig. 1a**). Press the coupling of the spray hose on to the connector. Make sure they engage properly (**Fig. 1b**).
- Place the spray-suction hose firmly on the grip section (**Fig. 2a**) and place the coupling of the spray hose on the connector of the grip section. Make sure they engage properly (**Fig. 2b**).
- Put on the suction tube and floor nozzle and make the connection secure by turning the union nut by hand in an anti-clockwise direction.

**Important note:** Make sure that the spray tube lying inside the tube is properly connected, otherwise this will lead to a malfunctioning of the unit.

- The hand nozzle for cleaning upholstery (*optional accessory*) is placed directly on the spray-suction hose.

# English

## ■ Putting into practical use

- Mix cleaning agent (RM) and clean water thoroughly in a clean container in accordance with the instructions (**Fig. 3**).
- Fill fresh-water tank up to the "Max." line, but not above this (**Fig. 4**).  
*Note: Warm water increases cleaning efficiency (max. 50 °C).*
- Place dirty-water container in the housing and put the lid on.
- Put power plug in the socket.
- Switch on unit with the "Suction" and "Spray" buttons (**Fig. 5**).
- To spray, press lever on grip section and keep it pressed. By doing so the cleaning solution is sprayed on and in the same process is vacuumed up (**Fig. 6**).
- Go over the surface to be cleaned in overlapping strips with the relevant nozzle, put on the nozzle and work backwards (**Fig. 6**).
- When the dirty-water reservoir is full or the fresh-water tank is empty, it is essential to turn the unit off with the "Suction" and "Spray" buttons.
- Remove cover, take out dirty-water reservoir and empty it (**Figs 7, 8**).
- Repeat working steps if necessary.

## Cleaning carpets and upholstery

- For cleaning carpets, apply the 230 mm floor nozzle.
- For cleaning upholstery, stair carpets, wall hangings or the inside of the car, apply the 110 mm hand nozzle (*optional accessory*).
- When cleaning upholstery, the amount of cleaning solution must be reduced for delicate fabrics and the surface wetted at a distance of approx. 200 mm.

## ■ Cleaning methods

### Normally dirty carpets:

- In the normal spray-extraction process the cleaning solution is sprayed on and vacuumed up immediately.
- Vacuuming again without spraying shortens the drying time.

### On very dirty surfaces or stains:

- First spray cleaning solution on to these areas and leave it to take effect for approx. 10–15 mins. Then go over the areas as already described.
- To get the best results, go over the area again with clean warm water only. In this way the residue of detergent is reduced further and the dissolved dirt fully washed away.

# English

## ■ Tips for working with the cleaner

---

**Carpeting, carpets and above all genuine Oriental carpets should be tested in an inconspicuous place to make sure they are colourfast and water resistant**

---

- The more sensitive the covering (Oriental rugs, Berber carpets, upholstery material), the less detergent should be used.
- Hemp-backed carpeting can shrink if it is worked too wet and the colour will run.
- Brush deep pile carpets when they are wet in the direction of the pile (e.g. with a pile brush or scrubber).
- You will achieve better cleaning results if you use warm water (up to a max. 50 °C).
- Spray badly stained areas separately and leave the detergent for 5–10 mins to take effect.
- Always work from light to dark, that means from windows to doors.
- Always work from the cleaned area to the non-cleaned area.
- After a textile covering has been cleaned wet, it should be treated to prevent it from becoming dirty again too quickly.
- Do not walk on cleaned areas or place furniture on them until they have dried (risk of rust stains or pressure marks).
- For carpets which have been shampooed, the foam in the dirty-water reservoir has to be neutralised.

## ■ Detergents

**Environmental note:** We recommend you use detergents sparingly out of consideration for the environment. Please follow precisely the instructions about how much to use.

**Caution:** To prevent injury to health or damage to property, please observe all instructions which are included with the detergents used.

## ■ Closing down

### Empty fresh-water tank

**Note:** *The fresh-water tank can be emptied simply by suction.*

- Take floor nozzle off spray-suction hose.
- Hold suction hose in the unused cleaning solution in the fresh-water tank and switch on the unit with the “suction” button (**Fig. 9**).
- The cleaning solution which has been suctioned off collects in the dirty-water reservoir.
- Take out dirty-water reservoir and empty it.

### Clean unit and accessories

- Put floor nozzle on spray-suction hose.
- Fill fresh-water tank with approx. 2 litres of tap water (use **no** detergent) and place floor nozzle in fresh-water tank.
- Switch on “spray” button and let the unit and accessories rinse thoroughly for approx. 1–2 mins. (**Fig. 10**).
- Switch unit off and pull the power plug out of the socket.
- Operate valve handle in the floor nozzle, in this way pressure in the system is removed.
- Pull out spray-suction hose on the unit and the suction tube.
- Empty dirty-water reservoir and fresh-water tank.
- Clean unit.
- The floor nozzle can be locked in the carrying handle for storage purposes or for transporting the unit (**Fig. 12**).

# English

## Care and Maintenance

### Caution:

Before any maintenance work takes place, pull the power plug out of the socket.

- Check mains cable, connection cable and hoses for damage before putting the unit into operation for the first time.
- Before longer periods of disuse, the entire water must be drained out of the unit otherwise unpleasant odours might ensue.
- From time to time clean the suction strainer in the fresh-water tank and the fluff strainer (Fig. 11).
- No part has to be lubricated.
- Store the cord and the whole appliance in a dry area. Never store the cord in the water tanks of this appliance!
- Do not run over, crush or pull the power supply cable or extension lead, otherwise it may be damaged. Protect the cable from heat, oil and sharp edges.

## Troubleshooting

### Caution:

*Danger from electrical current. Pull out mains power plug before any work is carried out on electrical parts.*

### No water coming out at the nozzle

1. Fresh-water tank empty, fill it.
2. Nozzle blocked, clean it.
3. Suction filter in fresh water tank blocked, clean it.
4. Spray pump defective, have it replaced by a technical expert.

### Spray emitted from one side only

1. Nozzle is partly blocked, clean it.

### Insufficient suction power

1. Cover not on properly, put it on properly
2. Seal on cover dirty, clean it.
3. Fluff strainer dirty, clean it.
4. Suction hose is blocked, check and clean it.

### Spray pump too loud

1. Fresh-water tank empty, fill it  
*Have all inspections and work carried out on electrical parts done by a technical expert. For more extensive tasks contact customer service.*

## Technical data

### Voltage variants

115 V (1~50/60 Hz)

### Power, blower motor

Suction turbine P <sub>max</sub>	1250	W
Suction turbine P <sub>nominal</sub>	1100	W
Air flow, max	54	l/sec.
Vacuum	220	mbar

### Power, spray pump

Spray pump	40	W
Spray pressure, max.	1	bar
Spray quantity	1	l/min.

### Dimensions

Filling capacity, fresh water	10	l
Capacity, dirty water	9	l
Length	665	mm
Width	320	mm
Height	435	mm
Weight	10,3	kg

### Sound level

Conforms to DIN 45635	68	dB(A)
-----------------------	----	-------

### Safety class

II

### Mains cable

Length	7,5	m
Type	H 05 VV – F 2x1	

*Specifications subject to change without prior notice.*

100/120~ 50/60Hz  
230-240V/1~ 50/60Hz

**C1** ENTSTOERKONDENSATOR  
SUPPRESSION CAPACITOR  
CONDENSATEUR ANTIPARASITES

**M1** SAUGTURBINE  
SUCTION TURBINE  
TURBINE D'ASPIRATION

**M2** PUMPENMOTOR  
PUMP-MOTOR  
**M3** MOTEUR DE POMPE

**N1** PLATINE  
CIRCUIT BOARD  
PLATINE

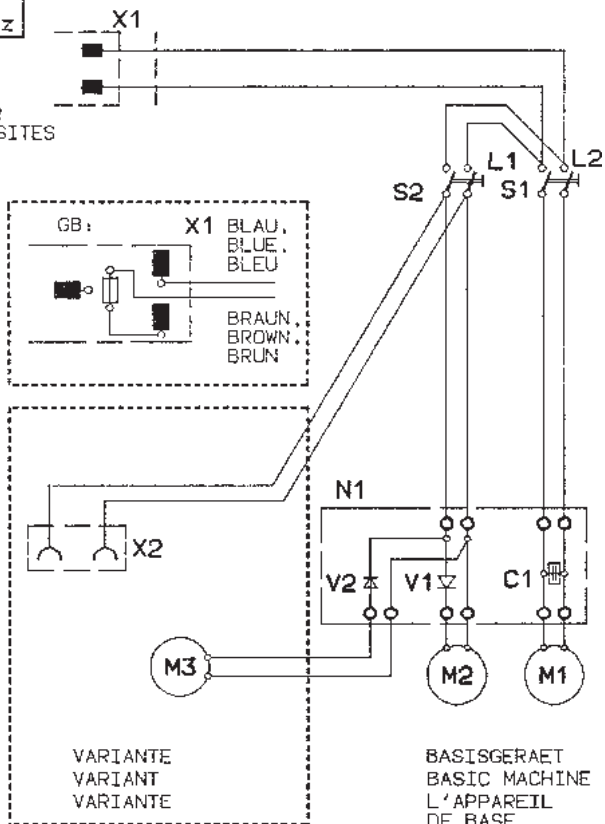
**S1** SCHALTER TURBINE  
SWITCH SUCTION TURBINE  
INTERRUPTEUR DE TURBINE

**S2** SCHALTER PUMPENMOTOR  
SWITCH PUMP-MOTOR  
INTERRUPTEUR MOTEUR DE POMPE

**V1** DIODE  
**V2** DIODE  
DIODE

**X1** STECKER  
PLUG  
FICHE

**X2** STECKDOSE  
SOCKET  
PRISE



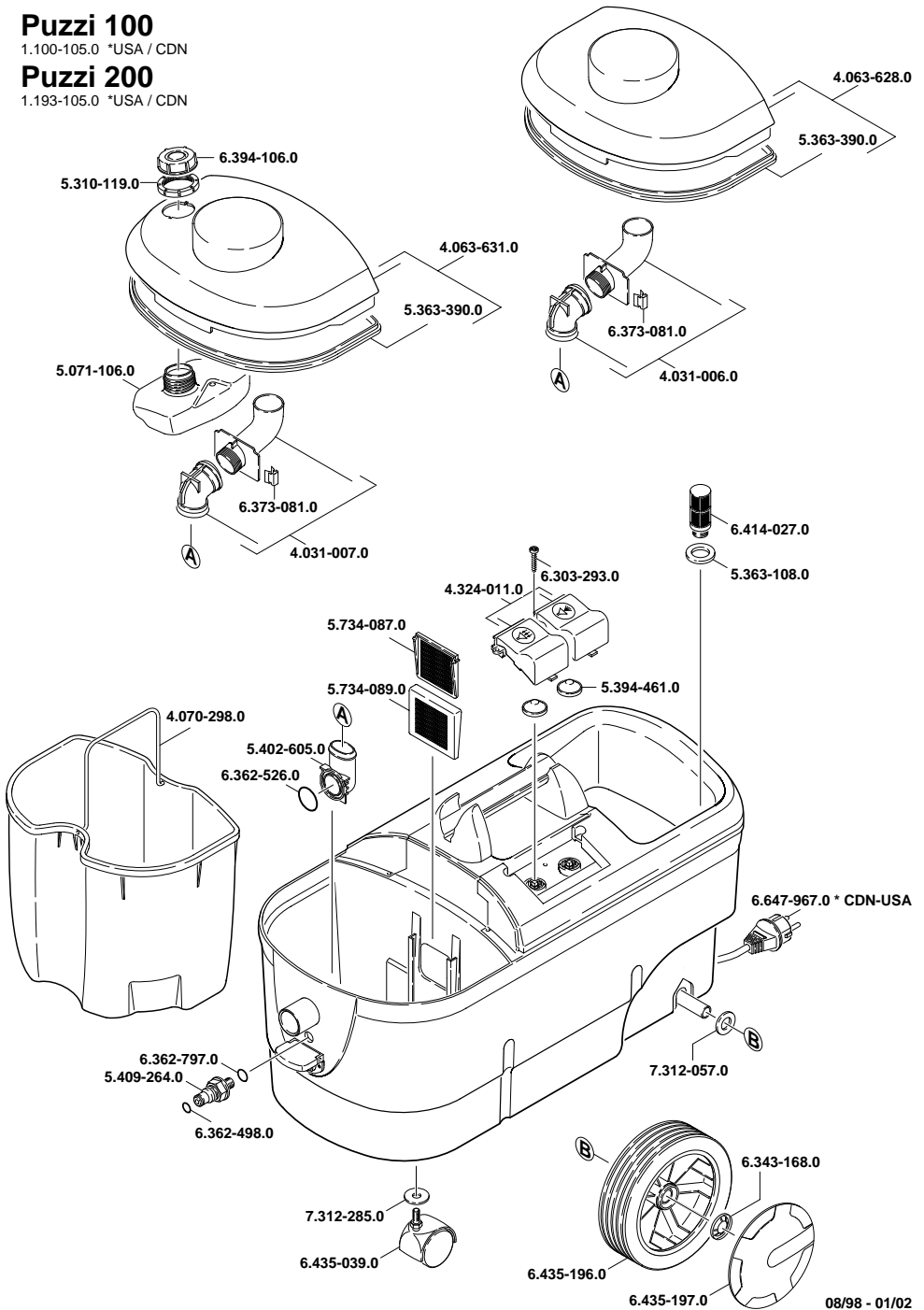


# Puzzi 100

1.100-105.0 \*USA / CDN

# Puzzi 200

1.193-105.0 \*USA / CDN



# Puzzi 100

1.100-105.0 \*USA / CDN

# Puzzi 200

1.193-105.0 \*USA / CDN

